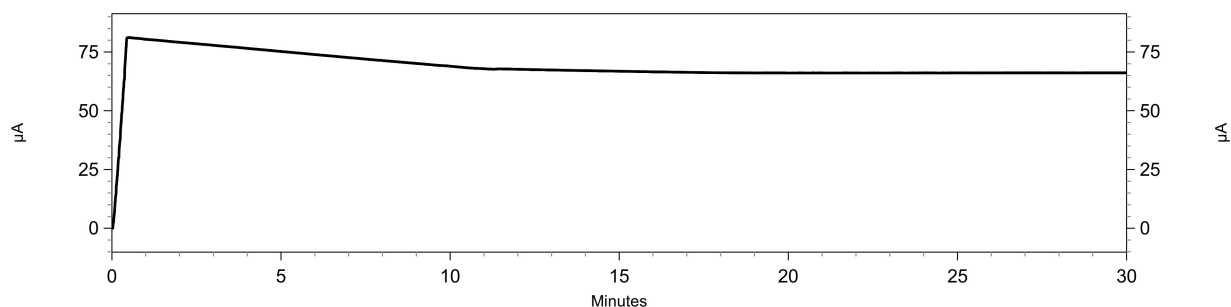
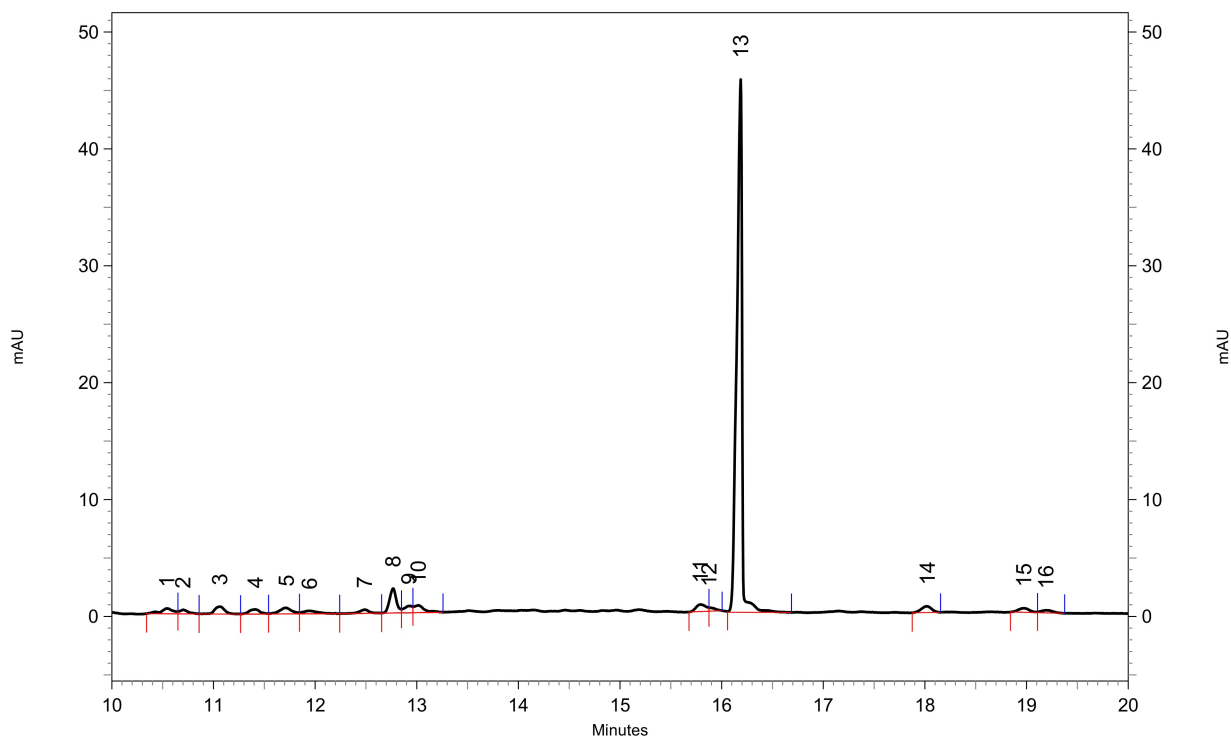


## Report - Capillary Electrophoresis

Current:



Electropherogram:



1: 225 nm, 6 nm Results, Peakzuordnung: 8 IS, 13 Sinalbin, 14 GR

Pk #	Migration Time	Corrected Area
1	10.542	311.85770751
2	10.700	159.34579439
3	11.063	334.61393597
4	11.413	218.76597298
5	11.717	318.20768137
6	11.946	187.93163586
7	12.488	148.01468135
8	12.767	646.01827676
9	12.925	209.86460348
10	13.017	289.94878361
11	15.792	221.79419525
12	15.875	64.09448819
13	16.188	8431.55727156
14	18.025	176.28294036

Sample ID: 2.29. #11 E=1,4099g Meth2  
 Path: C:\32Karat\projects\Brokkoli2020\Data\#157

**Report - Capillary Electrophoresis**

15	18.975	118.97233202
16	19.192	79.20104212
17	23.775	178.33859096

Totals		12094.80993373
--------	--	----------------