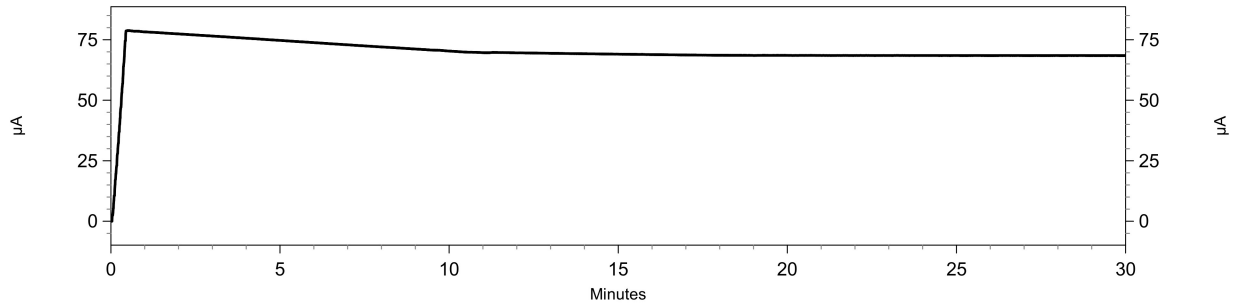
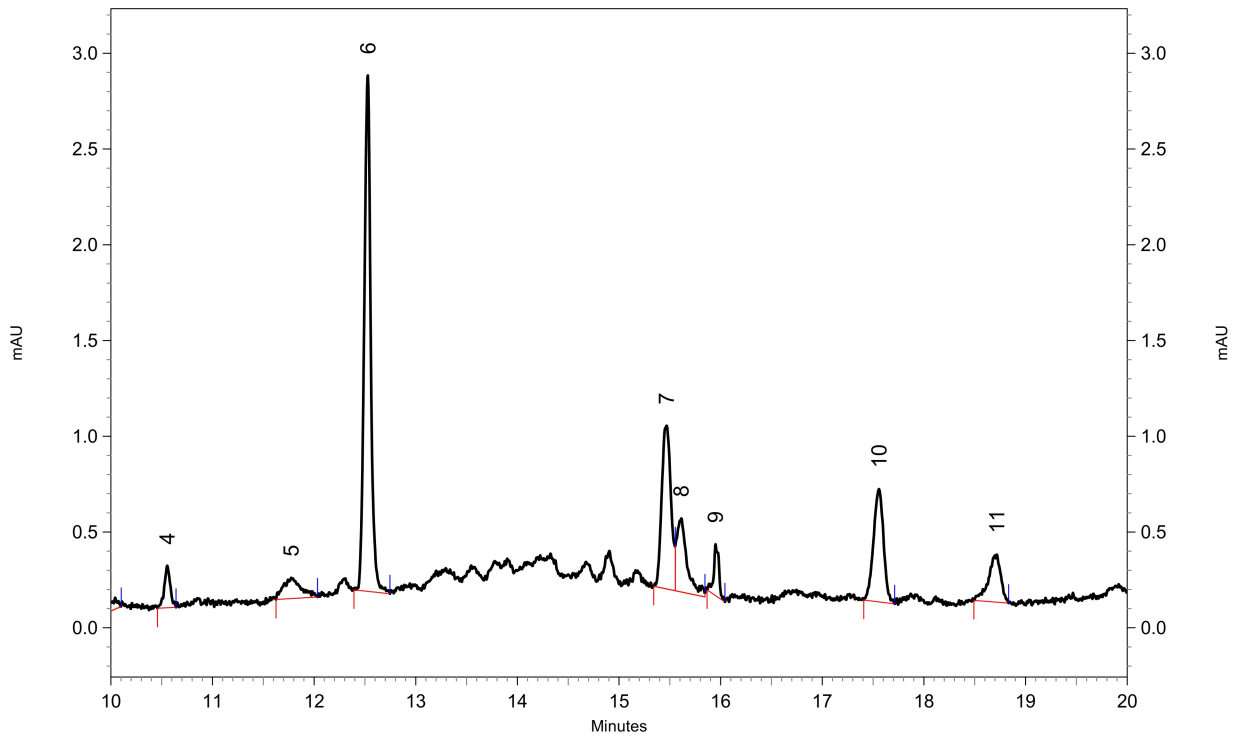


Report - Capillary Electrophoresis

Current:



Electropherogram:



1: 225 nm, 6 nm Results, Peakzuordnung: 6 IS, 10 GR, 11 GI

Pk #	Migration Time	Corrected Area
1	9.558	187.96861378
2	9.725	387.91773779
3	9.829	128.86816448
4	10.554	70.66719305
5	11.775	91.79051663
6	12.529	799.13535085
7	15.467	292.13362069
8	15.613	144.27542034
9	15.950	50.10449321
10	17.558	192.83341243
11	18.717	92.56455922

Totals		2438.25908246
--------	--	---------------

Sample ID: 2.17. #5b E=0,9391g Meth2
Path: C:\32Karat\projects\Brokkoli2020\Data\#145.dat

Report - Capillary Electrophoresis

Sample ID: 2.17. #5b E=0,9391g Meth2
Path: C:\32Karat\projects\Brokkoli2020\Data\#145.dat