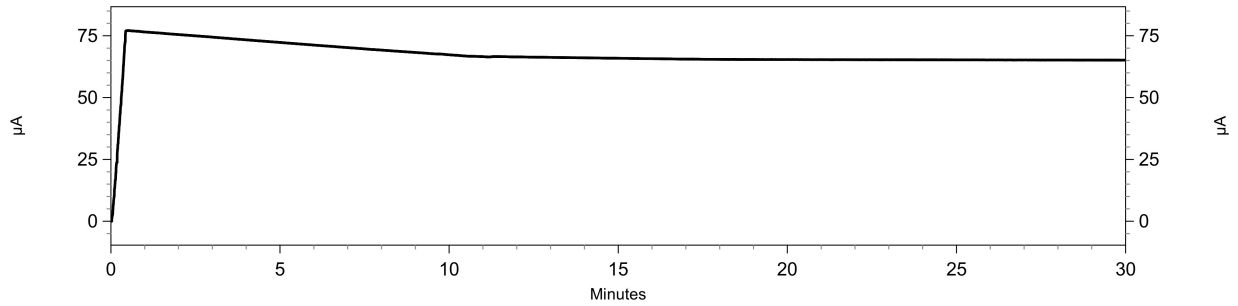
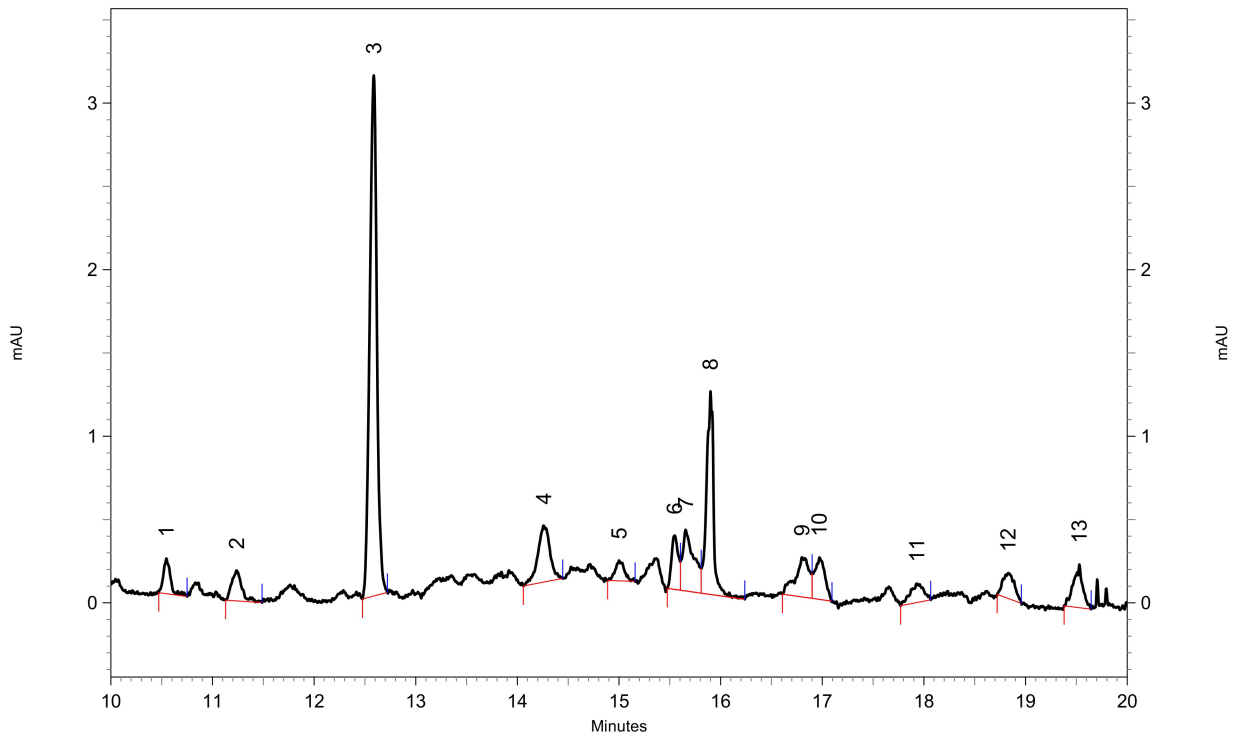


# Report - Capillary Electrophoresis

Current:



Electropherogram:



1: 225 nm, 6 nm Results, Peakzuordnung: 3 IS, 11 GR, 12 GI

Pk #	Migration Time	Corrected Area
1	10.546	80.75859344
2	11.238	94.03040415
3	12.588	1005.56107249
4	14.258	164.69900643
5	15.000	42.72222222
6	15.546	81.15786652
7	15.654	154.21879159
8	15.900	306.76100629
9	16.800	113.44246032
10	16.971	86.52099190
11	17.929	48.47780618
12	18.829	53.99424651
13	19.529	69.59675699
14	20.196	124.86073860

Sample ID: 2.46 #3 E=0,6020g Meth2

Path: C:\32Karat\projects\Brokkoli2020\Data\#214.dat

**Report - Capillary Electrophoresis**

15

21.729

64.12272291

Totals		2490.92468655
--------	--	---------------

**Sample ID:** 2.46 #3 E=0,6020g Meth2

**Path:** C:\32Karat\projects\Brokkoli2020\Data\#214.dat