



University of Münster

With a total of 44,500 students, the University of Münster is one of the largest universities in Germany with a rich and time-honoured tradition. It promotes internationally renowned cutting-edge research in numerous scientific and academic fields including evolutionary science. The University of Münster is committed to offering excellent research opportunities, high-quality teaching, and strong support to its junior researchers.



City of Münster

The city of Münster has around 300,000 inhabitants and is a bustling academic and cultural city. A historic city centre, modern urban city quarters, a lively cultural scene, a wealth of sport and recreational opportunities, and lots of green space in the city are appreciated by residents and students alike. Münster is widely known as the "bicycle capital of Germany".

Contact

Speaker

Prof. Dr. Jürgen Gadau
Institute for Evolution and Biodiversity
University of Münster

Contact address

Münster Graduate School of Evolution
University of Münster
Hüfferstr. 1a
48149 Münster, Germany
Phone: +49 (0)251 83-21252
Fax: + 49 (0)251 83-24668
Email: mgse@uni-muenster.de

www.uni-muenster.de/Evolution/mgse/



"This is an incredible programme that I would recommend to anyone. Wonderful people, excellent interactions, great facilities, and all within a beautiful and relaxing environment. I will treasure the time I spent in Münster for the connections I made, collaborations started, and for the productivity of my time. It was amazing to work hard and then unwind with a walk in the botanical garden across the street - great people and beautiful surroundings are combined in this programme."

Prof. Dr. Chris Smith (Earlham College, USA, ETT-Fellow May - June 2017)



› Visiting the Münster
Graduate School of Evolution
as Fellow of the
Evolution Think Tank

living.knowledge

MÜNSTER
GRADUATE
SCHOOL OF
EVOLUTION

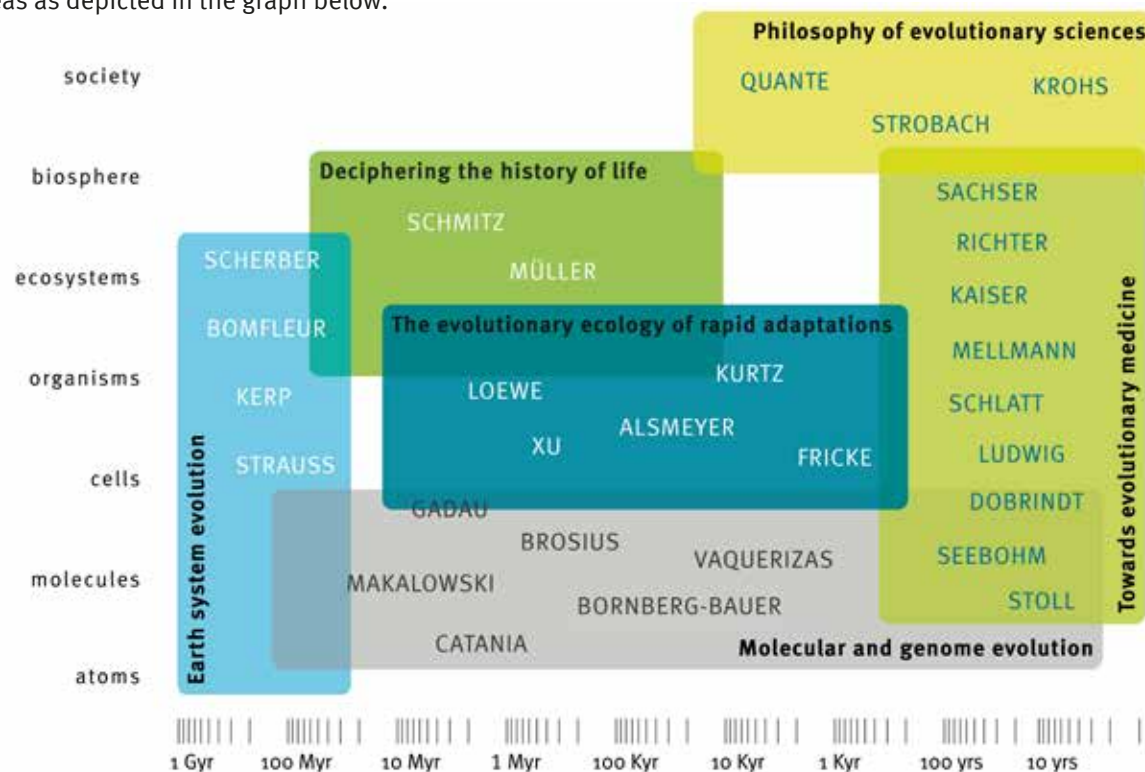


What is the MGSE?

The Münster Graduate School of Evolution (MGSE) is an interdisciplinary graduate school at the University of Münster that provides a multidisciplinary doctoral training based on the unifying conceptual framework of evolution. Researchers from the faculties of Biology, Medicine, Geosciences, Philosophy, and Mathematics contribute to the MGSE, thus forming an interdisciplinary network of excellent scientists working on diverse topics in evolution.

Which research areas are covered?

Currently, 30 research group leaders contribute to the MGSE who work on a large range of topics in evolution across a broad scale. Their work can be grouped into six research areas as depicted in the graph below.



What is the Evolution Think Tank?

The MGSE regularly invites internationally outstanding scientists for research stays of 1 - 6 months. During their stay they contribute to the so-called Evolution Think Tank (ETT) which aims at an advancement of evolutionary theory and its application across fields. ETT-Fellows will:

- visit different labs within the MGSE to interact with the doctoral students and PIs to explore avenues of cooperation and joint work,
- participate in the supervision of the doctoral students,
- organize workshops or 'theme groups' (series of meetings with a specific evolutionary topic), which can result, e.g. in review papers,
- give talks during the yearly symposium or in one of the MGSE lecture series.

What is provided for the Fellows?

In addition to scientific exchange and interaction with the MGSE members, we offer:

- funding for travel expenses and accommodation,
- a monthly stipend of up to 1000 € to cover extra expenses,
- an attractive office close to the *Schloss*, the main university building,
- and our 'Fellow-Leeze' (Leeze = bicycle in Münster dialect). As Münster is Germany's bicycle capital, we will provide you with a bike in MGSE design to experience the true Münster feeling.



How to apply?

ETT-Fellowships are designed for experienced postdoctoral and senior researchers. ETT-Fellows will be invited by the MGSE Steering Committee upon suggestion by MGSE members or after successful application. Applications should include a letter of motivation, Curriculum Vitae, and a summary of the research and teaching plans for the stay as ETT-Fellow. Applications and suggestions can be submitted at any time.