

INNOVATION HUB: SOCIO-ECOLOGICAL SUSTAINABILITY

“Sustainably into the future:
Shaping societal change together“



Focus & Purpose of the Innovation Hub

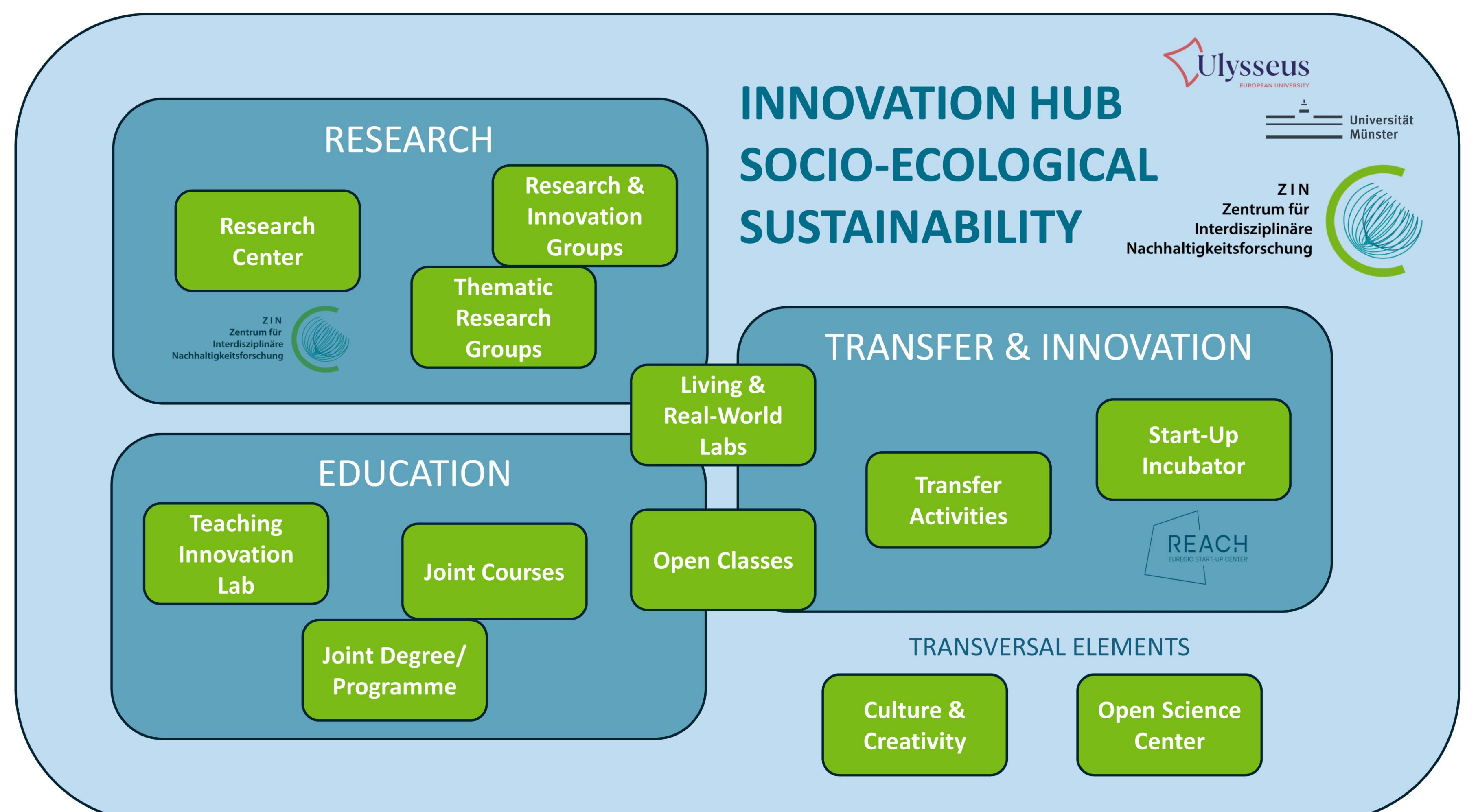
The aim of the Innovation Hub is to contribute to the development of innovative ideas and solutions to enable **sustainable well-being** for life on planet earth.

Therefore, the hub focuses on the central challenges of our time that require **comprehensive change**. Primarily ecological issues such as the climate crisis, species extinction and the energy transition cannot be separated from primarily social issues such as peace, democracy and justice.

Since these crises are complex and globally interconnected, the solutions must reflect that complexity. **Innovative strategies and ideas** that empower societies to overcome the socio-ecological challenges of the present are urgently needed. Developing these requires **inter- and transdisciplinary** approaches and a deep integration and interlinking of social and natural science contributions to sustainability research and practice.

To help **shape a sustainable future**, the diverse requirements for **viable solutions** to upcoming challenges are being examined and addressed.

The Innovation Hub for Socio-Ecological Sustainability is based at the **Centre for Interdisciplinary Sustainability Research (ZIN)** at the **University of Münster** and acts as an interlinking junction between sustainability actors from the university, the city of Münster, the Münsterland region and the European University Network Ulysseus. The Innovation Hub links their sustainability activities in the areas of **education, research and transfer/innovation**.



The elements and areas of activity of the Innovation Hub (shown in green) that are linked to the three fields of action of the university.

The Innovation Hub team connects stakeholders, facilitates exchange and transfer, designs courses, assists with matchmaking, and takes part in research groups and projects.

A key aspect is identifying, creating, and utilising **synergies**.

In the field of research, the hub supports the development of the emerging field „**Exploring and Shaping Sustainability**“, which is part of the „**Sustainable Futures**“ impact area in the university's research profile.

In particular, the hub is promoting the establishment of **Research & Innovation Groups** in the following areas:

- 1 FOOD**
Nutrition, agroecology, consumption, food safety, waste, governance
- 2 CO-CREATION/ REAL-WORLD LAB DESIGN**
Transformation, citizen science, democracy, social innovation, community, art & creativity, interculturality
- 3 FUTURABILITIES**
transformative education, education for sustainable development, futures capabilities, future skills
- 4 WATER**
Critical infrastructure, microplastics, flooding, distributive justice, energy, conflicts

