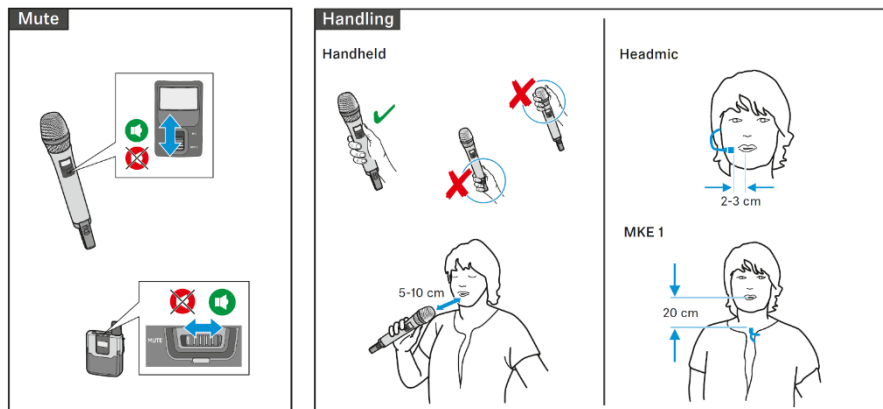
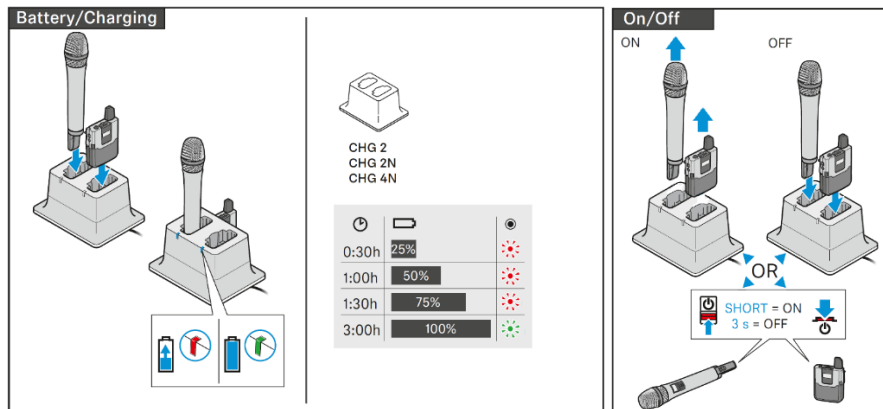
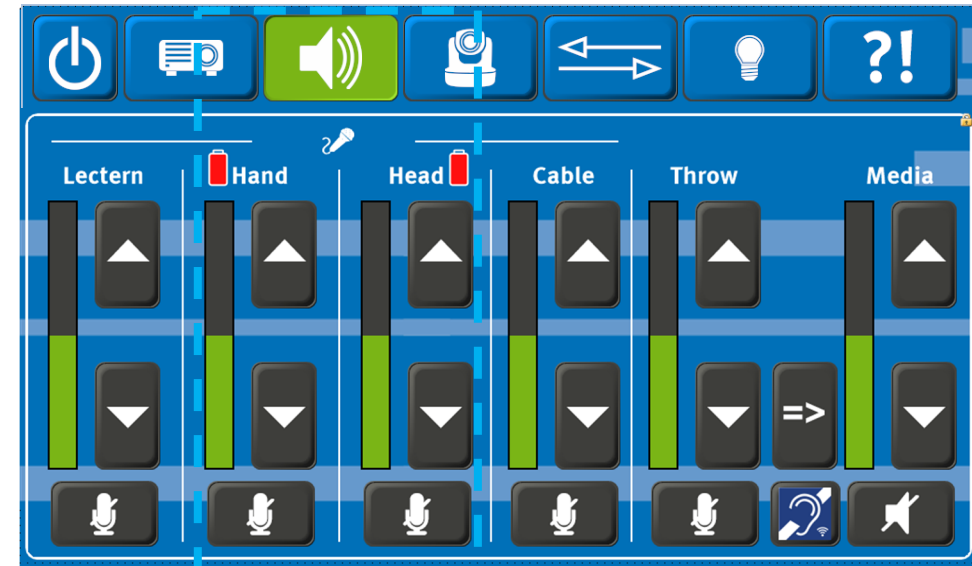


Quick Start Guide: Handheld & Headset Wireless Microphones



Excerpt from the Sennheiser Quick Guide
https://www.sennheiser.com/globalassets/digizuite/41327-en-sldw_quick_guide_12_2023.pdf



All controls for the microphones available in the room are located on the touch panel under "Volume".

By tapping or holding the "Up" or "Down" buttons, these can be adjusted according to your requirements.

Next to the bar indicators for the wireless microphones, there are battery icons that also show the microphones' battery status.

The status is displayed in three colors.

grey: The microphone is not switched on and is not connected to the receiver.

red: The microphone is connected, but the battery level is low.

green: The microphone is connected and the battery level is sufficient.

If you have any questions, please feel free to contact us



Scan the QR code, use the following link uni.ms/medientechnik or send us a mail at avm@uni-muenster.de.

In urgent cases please call our hotline at [\(0251\) 83 - 3 11 11](tel:(0251)83-31111).