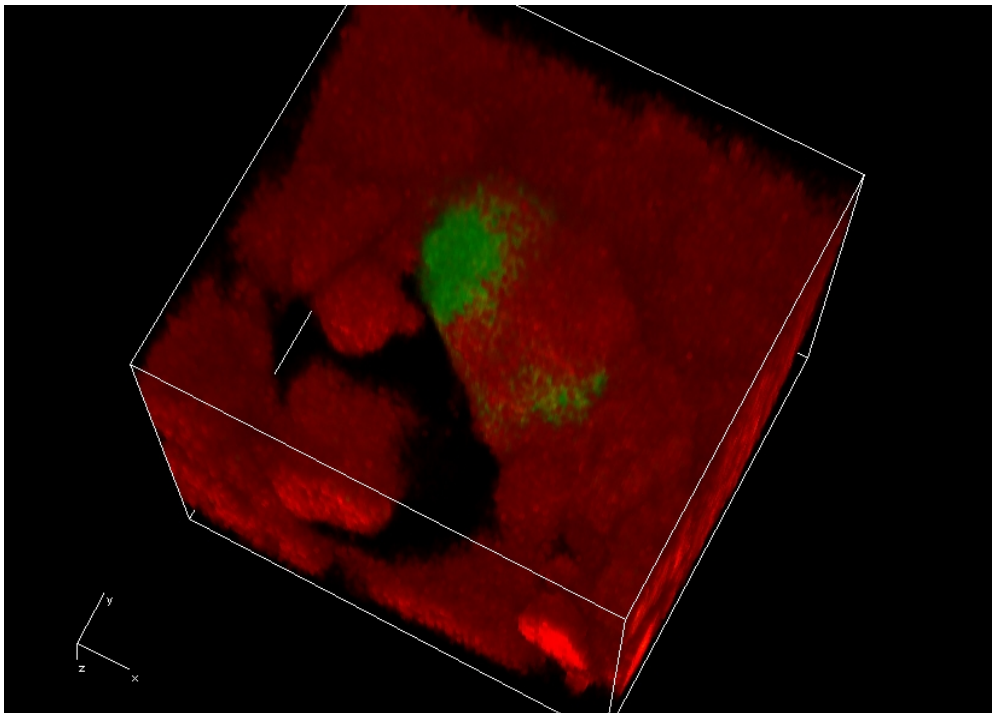


# Mini-Workshop on Cell Migration

at the  
Institute for Computational and Applied Mathematics  
WWU Münster

Thursday, February 10<sup>th</sup> 2011  
Orleansring 10, N2.



Tumor cell in the liver  
(by courtesy of Prof. Haier, Comprehensive Cancer Center of the WWU Münster)

## Program:

12:15-13:00 Jörg Haier (UKM, WWU Münster):  
*Organ Specific Cell Adhesion and Migration Processes in Metastasis.*

13:10-13:55 Luigi Preziosi (Politecnico di Torino):  
*Modelling Cell Adhesion and Invasion.*

14:05-14:50 Christina Surulescu (ICAM, WWU Münster):  
*Mathematical Modeling of Cell Behavior: From Microscale to Multiscale.*

15:00-15:45 Jan Kelkel (IANS, Universität Stuttgart):  
*A Multiscale Approach to Cancer Cell Migration in Tissue Networks.*