



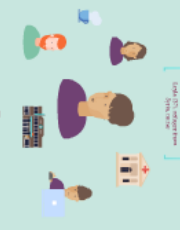
MAMBA Network



Challenges



**Research Questions:**  
 • Inwieweit können Lernimplikationen in der Wirtschaft?  
 • Inwieweit können Lernimplikationen in der Wirtschaft?  
 • Was können wir daraus für andere Politikfelder ableiten?



Main Results



**Setbacks and Challenges**

- inflexible funding guidelines
- temporary funding contracts
- potential for conflict in multidisciplinary networks
- paradox of 'welcome culture and high regulation'

• Duration: May 2015 - October 2017  
• Project Leader: PEHJ Münster  
• Metropolitan University  
• Research Units in 9 countries (PL, SE, NL,  
ES, IT, HU, EL, PL, DE)  
• 100 Community reporters  
• 10 Impact practices

Main question: how to design robust social investment strategies

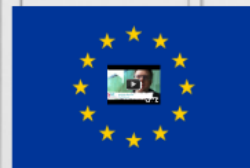
Social Investments

- are social policy measures, which aim at preparing people to cope with life risks
- long-term strategy preserving social and economic returns over time.

Comparative study of social expenditure in 28 EU member states  
Expert interviews about social policy reforms in 10 countries  
Case studies of innovative social investment strategies in 10 countries

# innosi

Innovative Social Investment  
Strengthening communities in Europe



HORIZON 2020

Carolyn Schönert, M.A.  
Institute of Political Science, WWU Münster



**Stephen Barnett**  
Euclid Network



- Duration: May 2015 - October 2017
- Project Leader: PERU Manchester Metropolitan University
- Research Units in 9 countries (FI, SE, NL, ES, IT, HU, EL, PL, DE)
- 100 Community reporters
- 10 Impact partners

Main question: how to design robust social investment strategies.

### Social investments

- are social policy measures, which aim at preparing people to cope with life risks
- long-term strategy presuming social and economic returns over time.

Comparative study of social expenditure in 28 EU member states

Expert interviews about social policy reforms in 10 countries

Case studies of innovative social investment strategies in 10 countries

# MAMBA Case Study



The image displays the MAMBA logo and its full name. Above the logo are three blue circles of increasing size, each containing text. A thick black horizontal line is positioned above the circles. The logo itself consists of the word 'MAMBA' in large, bold, black letters, followed by the full name in a smaller font.

**Small Circle:**  
MAMBA ist ein Projekt der Arbeitsagentur Münster, des Bundesministeriums für Arbeit und Soziales (BMAS) und der Bundesagentur für Arbeit (BA).

**Medium Circle:**  
MAMBA ist ein Projekt der Arbeitsagentur Münster, des Bundesministeriums für Arbeit und Soziales (BMAS) und der Bundesagentur für Arbeit (BA).


**Large Circle:**  
Innovative  
- Interkulturelle Kooperation  
- Close cooperation between  
- personal support for refugees and  
- system makers

# MAMBA

Münsters Aktionsprogramm für  
MigrantInnen & Bleibeberechtigte  
zur Arbeitsmarktintegration  
in Münster und im Münsterland

- 
- Funded by the Federal Ministry for Work and Social Affairs and the European Social Fund
  - founded in 2008
  - 3rd funding period, till 2019





Objective: Support refugees and asylum seekers in entering the educational system or labour market

Measures (e.g.):

- Psychosocial and legal advice
- education and qualification
- job placement

## **Innovative:**

- Intersectoral Cooperation
- close cooperation between networkpartners
- personal support for refugees and asylum seekers

# MAMBA Network





**GGUUA**

*Flüchtlingshilfe*

Non-profit society for the support of  
asylum seekers



**JAZ**

Jugendausbildungszentrum

Youth training centre



# GEBA



Company for vocational  
development and training



HANDWERKSKAMMER  
MÜNSTER

Chamber of Crafts training  
centre



**jobcenter**

STADT  MÜNSTER

Municipal employment office



# MAMBA Network



# Challenges



1 M refugees came to  
Germany in 2015

233 000 to NRW


- Variety of residence and work permits
- Uncertainty for employer and employees
- language deficits
- 75% without vocational qualification

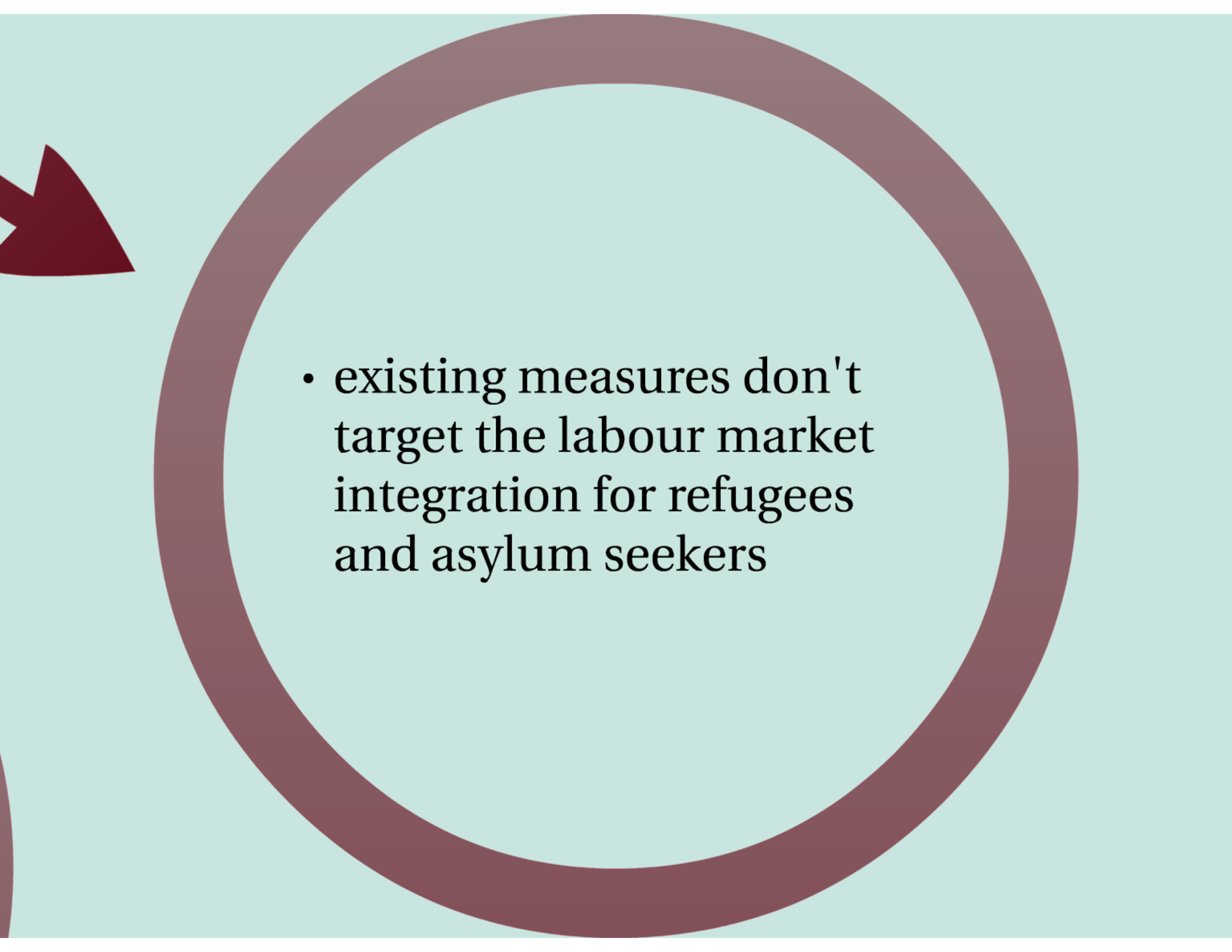
- existing measures don't target the labour market integration for refugees and asylum seekers





1 M refugees came to  
Germany in 2015

233 000 to NRW

- 
- Variety of residence and work permits
  - Uncertainty for employer and employees
  - language deficits
  - 75% without vocational qualification

- 
- existing measures don't target the labour market integration for refugees and asylum seekers



Research Questions:

Has the network been implemented as intended?

Did the project produce an economic and social impact?

What can we learn for other policy fields and regions?



[ Leyla (37), refugee from Syria, nurse ]



# Main Results



Social Impact



Economic impact





# Social Impact

# Social impact

- solution for new social problem
- enhanced understanding of target group + mutual understanding
- low threshold access to services + low drop outs
- effective social services
- lowers matching problems



**Economic impact**

- Economic impact I
- 1.000 participants from 2011 - 2015 with 340 (34%) successfully placed
- until 2019 envisaged 800 participants with 40% integraton rate

## Economic impact II

- economic return from 2nd year in employment or vocational training
- 12.000 Euro savings for every following year

## Setbacks and Challenges

- inflexible funding guidelines
- temporary funding contracts
- potential for conflict in multidisciplinary networks
- paradox of welcome culture and high regulation

## Sources:

Borosch, Nikola & Klein, Alexander (2016):  
MAMBA – labour market integration for  
refugees and asylum seekers in the city of  
Muenster (NRW).Münster

[innosi.eu](http://innosi.eu)