



What is the MGSE?

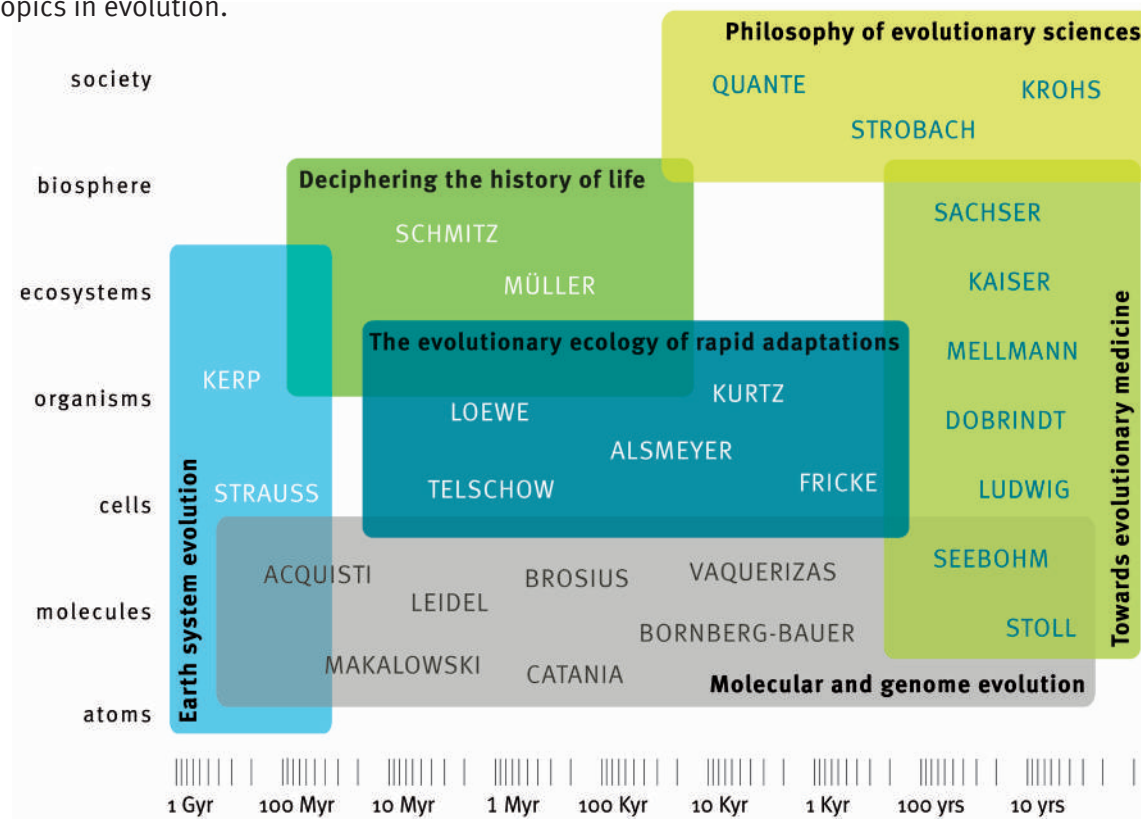
The Münster Graduate School of Evolution (MGSE) is an interdisciplinary graduate school that provides a multi-disciplinary doctoral training based on the unifying conceptual framework of evolution.

Researchers from the faculties of **Biology**, **Medicine**, **Geosciences**, **Philosophy**, and **Mathematics** contribute to the MGSE, thus forming an interdisciplinary network of excellent scientists working on diverse topics in evolution.

What are the research areas of the MGSE?

MGSE scientists work on a large range of topics like the evolution of the earth, the history of life, rapid adaptations, evolutionary medicine, and the philosophy of science.

The work of the MGSE can be grouped into six main research areas as depicted in the graph below:



› Visiting the Münster Graduate School of Evolution (MGSE) as an ETT-Fellow





What are ETT-Fellows?

ETT-Fellows are internationally outstanding scientists who visit the MGSE for 1 to 6 months and join with PIs of the MGSE to form the Evolution Think Tank (ETT). During their stay the ETT-Fellows

- participate in lab rotations, i.e. visit different labs within the MGSE for several days or weeks to interact with the doctoral students and PIs to explore avenues of cooperation and joint work,
- participate in the supervision of the doctoral students,
- organize and participate in workshops or 'theme groups' (series of meetings with a specific evolutionary topic), which can result e.g. in review papers,
- and give talks during the yearly symposium or one of the MGSE lecture series.



What is provided for the Fellows?

Based on financial support by 'Santander Universities' the MGSE is able to offer:

- funding for travel expenses,
- accomodation,
- a monthly stipend of up to 1000 € to cover extra expenses,
- an attractive office close the the City Palace, the main university building,
- and our 'Fellow-Leeze' (Leeze = bicycle in Münster dialect). As Münster is Germany's bicycle capital, we will provide you with a bike in MGSE design to experience the true Münster feeling.



How to apply?

ETT-Fellowships are designed for experienced postdoctoral and senior researchers. ETT-Fellows will be invited by the MGSE Steering Committee upon suggestion by MGSE members or after successful application. Applications and suggestions can be submitted at any time.



Contact

Speaker of the MGSE: Prof. Dr. Joachim Kurtz
Institute for Evolution and Biodiversity
joachim.kurtz@uni-muenster.de

MGSE Coordinator: Dr. Vanessa Kloke
mgse@uni-muenster.de

<http://ieb.uni-muenster.de/mgse/>



WESTFÄLISCHE
WILHELMS-UNIVERSITÄT
MÜNSTER

MÜNSTER
GRADUATE
SCHOOL OF
EVOLUTION